

EST. **CE**  1995  
**FORUM**

DISCIPLINE BUSINESS LEADERS OF INFLUENCE



# TRANSFORMED EXECUTIVES, TRANSFORMED WORLD

Established in 1995, The CEO Forum is a premier spiritual leadership development organization. Through safe and confidential gatherings, unique faith-based curriculum and education programs, one-on-one mentoring and discipleship, pastoral care and support from CEO Forum Staff, and gleaning from the experience and wisdom of Forum members, we provide the support leaders need to face the complex challenges in the marketplace.

As a result, leaders flourish in Christ as agents of transformation to make a positive difference in their workplace, while also equipping them to make a positive difference in the world. In short, Transformed Executives, Transformed World.

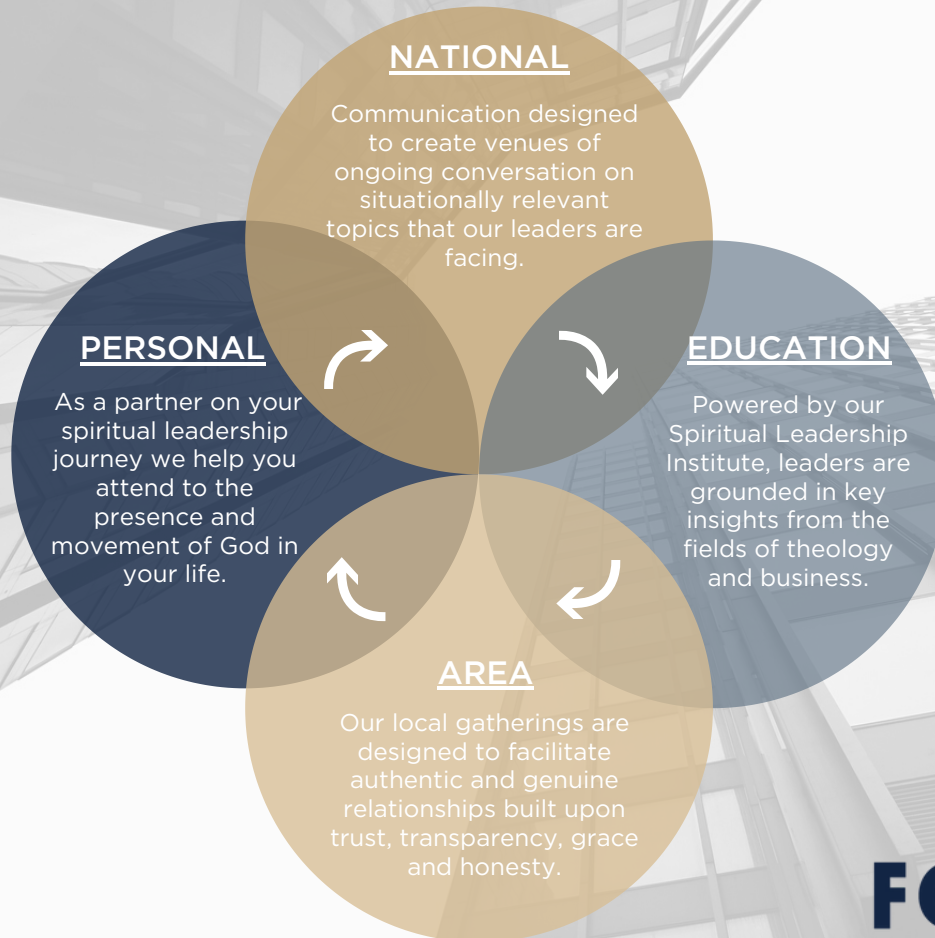
# MEMBER CRITERIA



**The CEO Forum is tailored exclusively for CEOs,  
Senior Executives and Board Members who....**

- Lead businesses with \$100+ million in revenue
- Board Members of businesses with \$500+ million in revenue
- Have P&L responsibilities of \$100+ million

# PATHWAYS OF ENGAGEMENT





# NATIONAL

# EDUCATION

## ANNUAL FORUM

- Held over two nights each fall for members and their spouses.
- Renowned guest speakers present on topics relevant to our members personal and professional lives.
- This event also provides a chance for members and spouses to engage one another in fellowship.

## NATIONAL EDUCATION SERIES

- A national communication initiative based on the Salt and Light principles of Matthew 5:13-16.
- Platform designed to create venues of ongoing conversations on culturally pertinent topics.
- A 30-minute Zoom call with an open forum that features our CEO, Rick Lytle and specific guest speaker.

- Powered by our Spiritual Leadership Institute (SLI), leaders are grounded in key insights from the fields of theology and business.



## CORE COURSE

- An intensive deep dive into what God's Word has to say on leadership.
- 3-year, 10 session course on "Becoming a Spiritual Leader of Influence".
- This course is taught by Dr. Richard Blackaby and facilitated by fellow executives who have walked a similar path.

## CHOOSE YOUR ENGAGEMENT

### ANNUAL FORUM

2 days a year

### NATIONAL EDUCATION SERIES

scheduled monthly

### CORE COURSE

10 sessions over the course of 3 years

### CORE COURSE

### DISCIPLESHIP CALL

scheduled monthly

# AREA

# PERSONAL

## AREA BREAKFAST/LUNCH

- Guest speaker to discuss current issues in the marketplace followed by fellowship time with area members.
- A confidential event for members to gather with local peers.

## AREA DINNER/SOCIAL

- No formal presentation or program.
- A social event for members and spouses that solely focuses on fellowship.

## VIRTUAL AREA CALL

- Provides the opportunity to connect with local CEO Forum peers.
- The calls are purpose driven and offer spiritual encouragement, business counsel, prayer and community.

## AREA FORUM

- Members gather in person to develop peer relationships with other high-level leaders.

## ONE-ON-ONE CONVERSATIONS

- As a partner on your journey, we will walk with you and facilitate attending to the presence and movement of God in your life.
- These calls provide you a confidential companion who offers the gift of total presence and listening.
- A safe place to discuss matters of deepest concern without criticism, fear, or judgment.

AREA  
BREAKFAST / LUNCH

2-3x a year

AREA  
DINNER / SOCIAL

1-2x a year

VIRTUAL AREA CALL

4-6x a year

AREA FORUM

Half day 3x a year

ONE-ON-ONE CONVERSATIONS

1 hour a month